

Everett Stackable Steel Banquet Chair

SKU: BQT-2042-ST



Discover the exceptional seating comfort offered by the Everett Steel Banquet Chair.

Thoughtfully designed to seamlessly combine durability and elegance, this chair showcases a robust steel frame that ensures enduring performance. What sets it apart even more is its **stackable** design and **glide feature**, which simplify both storage and arrangement, making it a versatile and pragmatic choice.

PRODUCT FEATURES

- 1 Stacks 10 High
- 2 Nickel Plated Swivel Glides
- 3 10 Year Warranty
- 4 Cal 117 Fire Safety Rating
- 5 Fully Welded 18 Gauge Steel Frame



PRODUCT SPECIFICATIONS

Everett Banquet Chair Specifications	
Overall Height	38 in
Overall Width	17.5 in
Overall Depth	23 in
Seat Height	18 in
Seat Width	15 in
Seat Depth	15 in
Seat Foam Thickness	2.5 in
Weight	12 lb
Weight Capacity	500 pounds
Frame Material	Steel
COM Seat Total	0.35 yards
COM Back Total	0.45 yards

Everett Customization

CRAFTED FOR UNIQUE BRANDS

Upholstery Options

Visit our [Upholstery Collection](#) page to search through thousands of upholstery options.

Our company offers the option of COM (Customer's Own Material) in our chair production, enabling clients to select their own materials to create chairs that perfectly align with their unique preferences

Chair Frame Finishes



Solid Black



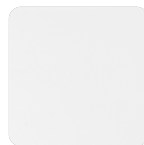
Texture
Black



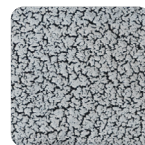
Gunmetal



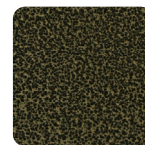
Metallic
Silver



White



Silver Vein



Gold Vein



Copper
Vein



Metallic
Brown



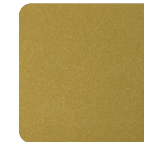
Copper
Sparkle



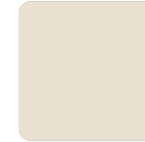
Walnut



Bronze
Sparkle



Metallic
Gold



Cream

Add-Ons



Ganging mechanism

Upgrade your chairs with our practical ganging mechanism. Seamlessly link one chair to another, providing stability and alignment for events and gatherings.



Webbed seating

Elevate your banquet chairs with the addition of webbed seating, designed for enhanced comfort.