

Superior Seating

Delivering the quality your business deserves.

2024
Banquet Chairs


PRICE LIST



 (866) 213-2401

 sales@superiorseating.com

 www.superiorseating.com

 721 Boulevard
Kenilworth, NJ 07033

12 GAUGE ALUMINUM FRAME

Price by Ordered Quantity

		Specifications	Quantity	COM/Grade 4	Grade 5	Grade 6	Grade 7	Grade 8	Grade 9	Grade 10
ELISEO SKU: BQT-1042-AL		Height: 36 in Width: 18 in Depth: 21.5 in Weight: 11 lb Flex-back ❌ Stacks 10 High	25-99	\$149 ^{.95}	\$157 ^{.95}	\$165 ^{.95}	\$169 ^{.95}	\$176 ^{.45}	\$180 ^{.95}	\$186 ^{.95}
			100-399	\$144 ^{.95}	\$152 ^{.95}	\$160 ^{.95}	\$164 ^{.95}	\$171 ^{.45}	\$175 ^{.95}	\$181 ^{.95}
			400+	\$140 ^{.95}	\$148 ^{.95}	\$156 ^{.95}	\$160 ^{.95}	\$167 ^{.45}	\$171 ^{.95}	\$177 ^{.95}
LUCCA SKU: BQT-3042-AL		Height: 37 in Width: 18 in Depth: 21.5 in Weight: 15.5 lb Flex-back ✅ Stacks 10 High	25-99	\$174 ^{.95}	\$182 ^{.95}	\$190 ^{.95}	\$194 ^{.95}	\$201 ^{.45}	\$205 ^{.95}	\$211 ^{.95}
			100-399	\$169 ^{.95}	\$177 ^{.95}	\$185 ^{.95}	\$189 ^{.95}	\$196 ^{.45}	\$200 ^{.95}	\$206 ^{.95}
			400+	\$164 ^{.95}	\$172 ^{.95}	\$180 ^{.95}	\$184 ^{.95}	\$191 ^{.45}	\$195 ^{.95}	\$201 ^{.95}
VOSS SKU: BQT-4042-AL		Height: 35.5 in Width: 18 in Depth: 22 in Weight: 16 lb Flex-back ✅ Stacks 10 High	25-99	\$179 ^{.95}	\$187 ^{.95}	\$195 ^{.95}	\$199 ^{.95}	\$206 ^{.45}	\$210 ^{.95}	\$216 ^{.95}
			100-399	\$174 ^{.95}	\$182 ^{.95}	\$190 ^{.95}	\$194 ^{.95}	\$201 ^{.45}	\$205 ^{.95}	\$211 ^{.95}
			400+	\$169 ^{.95}	\$177 ^{.95}	\$185 ^{.95}	\$189 ^{.95}	\$196 ^{.45}	\$200 ^{.95}	\$206 ^{.95}
ARTISAN SKU: BQT-5042-AL		Height: 36.5 in Width: 16.5 in Depth: 21.5 in Weight: 12.5 lb Flex-back ❌ Stacks 10 High	25-99	\$149 ^{.95}	\$157 ^{.95}	\$165 ^{.95}	\$169 ^{.95}	\$176 ^{.45}	\$180 ^{.95}	\$186 ^{.95}
			100-399	\$145 ^{.95}	\$153 ^{.95}	\$161 ^{.95}	\$165 ^{.95}	\$172 ^{.45}	\$176 ^{.95}	\$182 ^{.95}
			400+	\$139 ^{.95}	\$147 ^{.95}	\$155 ^{.95}	\$159 ^{.95}	\$166 ^{.45}	\$170 ^{.95}	\$176 ^{.95}
ORION SKU: BQT-6042-AL		Height: 36.5 in Width: 18 in Depth: 20.5 in Weight: 15.5 lb Flex-back ✅ Stacks 10 High	25-99	\$174 ^{.95}	\$182 ^{.95}	\$190 ^{.95}	\$194 ^{.95}	\$201 ^{.45}	\$205 ^{.95}	\$211 ^{.95}
			100-399	\$169 ^{.95}	\$177 ^{.95}	\$185 ^{.95}	\$189 ^{.95}	\$196 ^{.45}	\$200 ^{.95}	\$206 ^{.95}
			400+	\$164 ^{.95}	\$172 ^{.95}	\$180 ^{.95}	\$184 ^{.95}	\$191 ^{.45}	\$195 ^{.95}	\$201 ^{.95}

		Specifications	Quantity	COM/Grade 4	Grade 5	Grade 6	Grade 7	Grade 8	Grade 9	Grade 10
ELDRIC SKU: BQT-1052-AL		Height: 36.5 in Width: 16.5 in Depth: 21.5 in Weight: 16 lb Flex-back ✔ Seat Height: 18 in Seat Width: 16 in Seat Depth: 16 in COM: 1.1 yards Stacks 10 High	25-99	\$164 ^{.95}	\$172 ^{.95}	\$180 ^{.95}	\$184 ^{.95}	\$191 ^{.45}	\$195 ^{.95}	\$201 ^{.95}
			100-399	\$159 ^{.95}	\$167 ^{.95}	\$175 ^{.95}	\$179 ^{.95}	\$186 ^{.45}	\$190 ^{.95}	\$196 ^{.95}
			400+	\$155 ^{.95}	\$163 ^{.95}	\$171 ^{.95}	\$175 ^{.95}	\$182 ^{.45}	\$186 ^{.95}	\$192 ^{.95}
THALIA SKU: BQT-2052-AL		Height: 36.5 in Width: 16.5 in Depth: 23 in Weight: 19 lb Flex-back ✔ Seat Height: 18 in Seat Width: 16 in Seat Depth: 16 in COM: 1.1 yards Stacks 10 High	25-99	\$169 ^{.95}	\$177 ^{.95}	\$185 ^{.95}	\$189 ^{.95}	\$196 ^{.45}	\$200 ^{.95}	\$206 ^{.95}
			100-399	\$164 ^{.95}	\$172 ^{.95}	\$180 ^{.95}	\$184 ^{.95}	\$191 ^{.45}	\$195 ^{.95}	\$201 ^{.95}
			400+	\$159 ^{.95}	\$167 ^{.95}	\$175 ^{.95}	\$179 ^{.95}	\$186 ^{.45}	\$190 ^{.95}	\$196 ^{.95}
TATUM SKU: BQT-3052-AL		Height: 36.5 in Width: 16.5 in Depth: 23.5 in Weight: 16 lb Flex-back ✔ Seat Height: 18 in Seat Width: 16 in Seat Depth: 16 in COM: 1.1 yards Stacks 10 High	25-99	\$169 ^{.95}	\$177 ^{.95}	\$185 ^{.95}	\$189 ^{.95}	\$196 ^{.45}	\$200 ^{.95}	\$206 ^{.95}
			100-399	\$164 ^{.95}	\$172 ^{.95}	\$180 ^{.95}	\$184 ^{.95}	\$191 ^{.45}	\$195 ^{.95}	\$201 ^{.95}
			400+	\$159 ^{.95}	\$167 ^{.95}	\$175 ^{.95}	\$179 ^{.95}	\$186 ^{.45}	\$190 ^{.95}	\$196 ^{.95}
OPHELIA SKU: BQT-4052-AL		Height: 36.5 in Width: 16.5 in Depth: 23.5 in Weight: 16 lb Flex-back ✔ Seat Height: 18 in Seat Width: 16 in Seat Depth: 16 in COM: 1.1 yards Stacks 10 High	25-99	\$169 ^{.95}	\$177 ^{.95}	\$185 ^{.95}	\$189 ^{.95}	\$196 ^{.45}	\$200 ^{.95}	\$206 ^{.95}
			100-399	\$164 ^{.95}	\$172 ^{.95}	\$180 ^{.95}	\$184 ^{.95}	\$191 ^{.45}	\$195 ^{.95}	\$201 ^{.95}
			400+	\$159 ^{.95}	\$167 ^{.95}	\$175 ^{.95}	\$179 ^{.95}	\$186 ^{.45}	\$190 ^{.95}	\$196 ^{.95}
THERON SKU: BQT-5025-AL		Height: 36.5 in Width: 16.5 in Depth: 23.5 in Weight: 13.5 lb Flex-back ✔ Seat Height: 18 in Seat Width: 16 in Seat Depth: 16 in COM: 1.15 yards Stacks 10 High	25-99	\$174 ^{.95}	\$182 ^{.95}	\$190 ^{.95}	\$194 ^{.95}	\$201 ^{.45}	\$205 ^{.95}	\$211 ^{.95}
			100-399	\$169 ^{.95}	\$177 ^{.95}	\$185 ^{.95}	\$189 ^{.95}	\$196 ^{.45}	\$200 ^{.95}	\$206 ^{.95}
			400+	\$164 ^{.95}	\$172 ^{.95}	\$180 ^{.95}	\$184 ^{.95}	\$191 ^{.45}	\$195 ^{.95}	\$201 ^{.95}
HARLAN SKU: BQT-1062-AL		Height: 34 in Width: 18 in Depth: 23 in Weight: 16 lb Flex-back ✘ Seat Height: 18 in Seat Width: 15.5 in Seat Depth: 14.5 in COM: 0.9 yards Stacks 10 High	25-99	\$179 ^{.95}	\$187 ^{.95}	\$195 ^{.95}	\$199 ^{.95}	\$206 ^{.45}	\$210 ^{.95}	\$216 ^{.95}
			100-399	\$174 ^{.95}	\$182 ^{.95}	\$190 ^{.95}	\$194 ^{.95}	\$201 ^{.45}	\$205 ^{.95}	\$211 ^{.95}
			400+	\$169 ^{.95}	\$177 ^{.95}	\$185 ^{.95}	\$189 ^{.95}	\$196 ^{.45}	\$200 ^{.95}	\$206 ^{.95}
ASHER SKU: BQT-2062-AL		Height: 36.5 in Width: 18.5 in Depth: 24 in Weight: 14 lb Flex-back ✘ Seat Height: 18 in Seat Width: 15.5 in Seat Depth: 16 in COM: 0.9 yards Stacks 10 High	25-99	\$189 ^{.95}	\$197 ^{.95}	\$205 ^{.95}	\$209 ^{.95}	\$216 ^{.45}	\$220 ^{.95}	\$226 ^{.95}
			100-399	\$184 ^{.95}	\$192 ^{.95}	\$200 ^{.95}	\$204 ^{.95}	\$211 ^{.45}	\$215 ^{.95}	\$221 ^{.95}
			400+	\$178 ^{.95}	\$186 ^{.95}	\$194 ^{.95}	\$198 ^{.95}	\$205 ^{.45}	\$209 ^{.95}	\$215 ^{.95}
ARVID SKU: BQT-3062-AL		Height: 37 in Width: 18 in Depth: 21.5 in Weight: 14.5 lb Flex-back ✘ Seat Height: 18 in Seat Width: 15.5 in Seat Depth: 16 in COM: 0.9 yards Stacks 10 High	25-99	\$189 ^{.95}	\$197 ^{.95}	\$205 ^{.95}	\$209 ^{.95}	\$216 ^{.45}	\$220 ^{.95}	\$226 ^{.95}
			100-399	\$184 ^{.95}	\$192 ^{.95}	\$200 ^{.95}	\$204 ^{.95}	\$211 ^{.45}	\$215 ^{.95}	\$221 ^{.95}
			400+	\$178 ^{.95}	\$186 ^{.95}	\$194 ^{.95}	\$198 ^{.95}	\$205 ^{.45}	\$209 ^{.95}	\$215 ^{.95}

12 GAUGE ALUMINUM

		Specifications	Quantity	COM/Grade 4	Grade 5	Grade 6	Grade 7	Grade 8	Grade 9	Grade 10
ELLA SKU: BQT-4062-AL		Height: 34.5 in Width: 18.5 in Depth: 24 in Weight: 18 lb Flex-back  Seat Height: 18 in Seat Width: 15.5 in Seat Depth: 16.5 in COM: 1.1 yards Stacks 10 High	25-99	\$209 ^{.95}	\$217 ^{.95}	\$225 ^{.95}	\$229 ^{.95}	\$236 ^{.45}	\$240 ^{.95}	\$246.95
			100-399	\$203 ^{.95}	\$211 ^{.95}	\$219 ^{.95}	\$223 ^{.95}	\$230 ^{.45}	\$234 ^{.95}	\$240.95
			400+	\$197 ^{.95}	\$205 ^{.95}	\$213 ^{.95}	\$217 ^{.95}	\$224 ^{.45}	\$228 ^{.95}	\$234.95
ALARIC SKU: BQT-5062-AL		Height: 34 in Width: 18.5 in Depth: 24 in Weight: 20 lb Flex-back  Seat Height: 18 in Seat Width: 15.5 in Seat Depth: 16.5 in COM: 0.9 yards Stacks 10 High	25-99	\$199 ^{.95}	\$207 ^{.95}	\$215 ^{.95}	\$219 ^{.95}	\$226 ^{.45}	\$230 ^{.95}	\$236.95
			100-399	\$193 ^{.95}	\$201 ^{.95}	\$209 ^{.95}	\$213 ^{.95}	\$220 ^{.45}	\$224 ^{.95}	\$230 ^{.95}
			400+	\$187 ^{.95}	\$195 ^{.95}	\$203 ^{.95}	\$207 ^{.95}	\$214 ^{.45}	\$218 ^{.95}	\$224 ^{.95}
ATTICUS SKU: BQT-2572-AL		Height: 37 in Width: 19 in Depth: 24.5 in Weight: 16 lb Flex-back  Seat Height: 18 in Seat Width: 19.5 in Seat Depth: 19.5 in COM: 0.85 yards Stacks 5 High	25-99	\$169 ^{.95}	\$177 ^{.95}	\$185 ^{.95}	\$189 ^{.95}	\$196 ^{.45}	\$200 ^{.95}	\$206 ^{.95}
			100-399	\$164 ^{.95}	\$172 ^{.95}	\$180 ^{.95}	\$184 ^{.95}	\$191 ^{.45}	\$195 ^{.95}	\$201 ^{.95}
			400+	\$159 ^{.95}	\$167 ^{.95}	\$175 ^{.95}	\$179 ^{.95}	\$186 ^{.45}	\$190 ^{.95}	\$196 ^{.95}
ATTICUS SKU: BQT-1572-AL		Height: 37 in Width: 23 in Depth: 24.5 in Weight: 28.5 lb Flex-back  Seat Height: 18 in Seat Width: 20 in Seat Depth: 20 in COM: 0.85 yards Stacks 5 High	25-99	\$189 ^{.95}	\$197 ^{.95}	\$205 ^{.95}	\$209 ^{.95}	\$216 ^{.45}	\$220 ^{.95}	\$226 ^{.95}
			100-399	\$184 ^{.95}	\$192 ^{.95}	\$200 ^{.95}	\$204 ^{.95}	\$211 ^{.45}	\$215 ^{.95}	\$221 ^{.95}
			400+	\$178 ^{.95}	\$186 ^{.95}	\$194 ^{.95}	\$198 ^{.95}	\$205 ^{.45}	\$209 ^{.95}	\$215 ^{.95}
ELIO SKU: BQT-3472-AL		Height: 36 in Width: 20 in Depth: 22 in Weight: 13.5 lb Flex-back  Seat Height: 18 in Seat Width: 18.5 in Seat Depth: 16 in COM: 0.85 yards Stacks 4 High	25-99	\$149 ^{.95}	\$157 ^{.95}	\$165 ^{.95}	\$169 ^{.95}	\$176 ^{.45}	\$180 ^{.95}	\$186 ^{.95}
			100-399	\$145 ^{.95}	\$153 ^{.95}	\$161 ^{.95}	\$165 ^{.95}	\$172 ^{.45}	\$176 ^{.95}	\$182 ^{.95}
			400+	\$139 ^{.95}	\$147 ^{.95}	\$155 ^{.95}	\$159 ^{.95}	\$166 ^{.45}	\$170 ^{.95}	\$176 ^{.95}
ELIO SKU: BQT-4472-AL-AR		Height: 36 in Width: 20 in Depth: 22 in Weight: 25 lb Flex-back  Seat Height: 18 in Seat Width: 18.5 in Seat Depth: 16 in COM: 0.85 yards Stacks 4 High	25-99	\$199 ^{.95}	\$207 ^{.95}	\$215 ^{.95}	\$219 ^{.95}	\$226 ^{.45}	\$230 ^{.95}	\$236 ^{.95}
			100-399	\$193 ^{.95}	\$201 ^{.95}	\$209 ^{.95}	\$213 ^{.95}	\$220 ^{.45}	\$224 ^{.95}	\$230 ^{.95}
			400+	\$187 ^{.95}	\$195 ^{.95}	\$203 ^{.95}	\$207 ^{.95}	\$214 ^{.45}	\$218 ^{.95}	\$224 ^{.95}
ELISEO SKU: BQT-1042-ST		Height: 36 in Width: 18 in Depth: 21.5 in Weight: 12 lb Flex-back  Seat Height: 18 in Seat Width: 15.5 in Seat Depth: 16 in COM: 0.8 yards Stacks 10 High	25-99	\$119 ^{.95}	\$127 ^{.95}	\$135 ^{.95}	\$139 ^{.95}	\$146 ^{.45}	\$150 ^{.95}	\$156 ^{.95}
			100-399	\$116 ^{.95}	\$124 ^{.95}	\$132 ^{.95}	\$136 ^{.95}	\$143 ^{.45}	\$147 ^{.95}	\$153 ^{.95}
			400+	\$112 ^{.95}	\$120 ^{.95}	\$128 ^{.95}	\$132 ^{.95}	\$139 ^{.45}	\$143 ^{.95}	\$149 ^{.95}
ARTISAN SKU: BQT-5042-ST		Height: 36.5 in Width: 16.5 in Depth: 21.5 in Weight: 14 lb Flex-back  Seat Height: 18 in Seat Width: 16 in Seat Depth: 16 in COM: 0.8 yards Stacks 10 High	25-99	\$119 ^{.95}	\$127 ^{.95}	\$135 ^{.95}	\$139 ^{.95}	\$146 ^{.45}	\$150 ^{.95}	\$156 ^{.95}
			100-399	\$116 ^{.95}	\$124 ^{.95}	\$132 ^{.95}	\$136 ^{.95}	\$143 ^{.45}	\$147 ^{.95}	\$153 ^{.95}
			400+	\$112 ^{.95}	\$120 ^{.95}	\$128 ^{.95}	\$132 ^{.95}	\$139 ^{.45}	\$143 ^{.95}	\$149 ^{.95}

18 GAUGE STEEL

CUSTOMIZABLE OPTIONS

Frame Finishes

Explore the variety in our collection of 14 distinct frame finishes.

From classic black to metallic gold, each finish is thoughtfully designed to cater to diverse preferences. Choose the perfect frame to complement your style and effortlessly elevate any space. Redefining the essence of banquet chair aesthetics, these frame finishes add a touch of customization to suit every occasion.



Solid Black



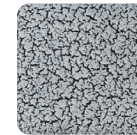
Texture Black



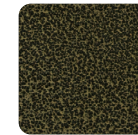
Gunmetal



Metallic Silver



Silver Vein



Gold Vein



Copper Vein



Metallic Brown



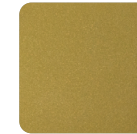
Copper Sparkle



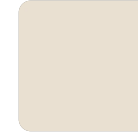
Walnut



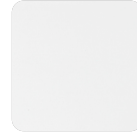
Bronze Sparkle



Metallic Gold



Cream



White

Optional Add-Ons



Nickel Glides

Banquet chairs come standard with nickel glides, ensuring scratch-free surfaces and smooth mobility.

Included



Nylon Glides

Enhance floor protection with nylon glides, safeguarding surfaces from scratches while ensuring smooth chair mobility.

\$8



Welded Wire Gangers

Durable wire gangers, seamlessly welded to chair frames for a sleek look. Choose from black, silver, or gold finishes to complement any space.

\$12



Retractable Gangers

Retractable gangers welded to the chair frame for seamless integration. Effortlessly concealed when not in use, available in black, silver, and gold.

\$12



Webbed Seating

Webbed seating allows the seat to contour to the user's body, increasing the comfort and longevity of the banquet

\$29

Terms and Conditions

Pricing

All prices are Lincoln, NC factory. Prices are exclusive of freight, taxes, and duties. In the event Superior Seating is required to pay any taxes or fees, the customer shall reimburse Superior Seating. All prices are subject to change without prior notice.

Minimum Order

Superior Seating has an order minimum \$1500 list. Any order below the minimum will be accepted on a case by case basis and will incur a minimum order fee of \$250 list.

Quotations

All quotations given by Superior Seating employees or representatives are valid for 30 days unless extended in writing.

Payment Terms

Payment is due net 30 days from the date of invoice, subject to credit approval. The interest rate will be 1.5% per month on past due balance. All bank fees, collection costs, attorney fees, and court costs in order to collect a past due balance will be incurred by the purchaser.

New Accounts

Initial orders require a 50% deposit to begin production and payment in full before shipping if credit terms are not approved before product ready date. Please send full credit information and references at the time of or before order placement to allow time for credit approval.

Returns

All returns must be authorized with the express written consent of an Superior Seating employee or representative. Superior Seating will refuse products returned without authorization. The customer is responsible for packaging any returned items appropriately and will be liable for any shipping damages.

All items are made to order and can not be returned to stock. Superior Seating will notify customers of any handling/salvage fees at time of return authorization. Handling/salvage fees will be assessed on a case by case basis. The customer will also be responsible for all outbound and return freight charges.

Order Acknowledgements

Customers must notify Superior Seating of any discrepancies between purchase order and acknowledgment immediately. Orders will be produced based on specifications in the acknowledgment. Superior Seating will take no responsibility for manufacturing errors based on these discrepancies.

Matching

If any order is to match a prior order, this must be indicated when placing the order. Please provide a previous invoice or order number when placing the order.

Design Changes

Superior Seating reserves the right to make changes to existing product designs without prior notification. Products may vary slightly from catalog photography. All dimensions are approximate and may vary by as much as 1". Superior Seating assumes no responsibility for dimensions of the product unless these dimensions are confirmed in writing to fit a specific space.

Cancellations/Changes

All cancellations and changes must be authorized with the express written consent of an Superior Seating employee or representative. Customer is responsible for all costs incurred as a result of the cancellation or change up to the full amount of the order. Fees will be assessed on a case by case basis at the discretion of Superior Seating.

Shipping and Damage Claims

Shipping will be done via Superior Seating's preferred carrier unless otherwise specified on the customer purchase order. Superior Seating is not responsible for any damage or delays in transit.

Visible damage to product or packaging and variances in order quantity or specifications must be noted on the freight bill and communicated to Superior Seating within 7 days of order receipt. Any concealed damage must be communicated within 7 days of order receipt. Incorrect or damaged merchandise is not to be put into service. Once merchandise is in use it is deemed acceptable and can no longer be replaced. Failure to inspect the order within the noted time frame shall constitute acceptance of the order and a waiver of any errors, shortages or defects

Delivery Delays

Quoted delivery dates are estimated and are subject to change by Superior Seating. If a specific delivery date is required this must be indicated and confirmed before the order is placed. Additional charges may apply for rush orders and specific delivery dates.

Samples

Samples must be paid for in full and can not be returned or credited.

Storage

Once production of an order has begun the ship/delivery date can not be changed from the date originally specified. Superior Seating will provide a grace period of 4 weeks after the order ready date where storage fees will not be charged. After such date, storage charges will be applied at 0.5% of the total order value per week. Customers with terms must expressly agree to pay all storage charges incurred before the order is shipped. Customers without terms must pay all storage charges incurred prior to shipping.

Warranty

Superior Seating warrants that all products will be free from manufacturing defects in material and workmanship under normal use and service for the periods as follows:

- Banquet chair metal frames are warranted against failure from broken welds for 10 years from the date of the invoice.
- Upholstery fabrics are subject to the warranty offered by their upholstery mills. They are not covered by the standard Superior Seating warranty. Cuts or tears detected after signing for receipt of upholstered products are not covered.

Superior Seating's obligation under this warranty is limited to credit for, replacement of, or repair of the defective item based on Superior Seating's discretion. In no case shall liability under this warranty exceed the purchase price of the defective item. This warranty will not apply to products that have been repaired or modified by anyone other than Superior Seating. Superior Seating will not assume any labor charges for unauthorized repairs. This warranty does not cover normal wear and tear.

To make a warranty claim, please contact Superior Seating or Superior Seating representative. Do not return merchandise without prior authorization.