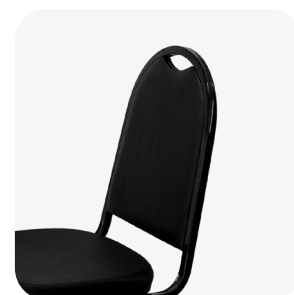


Everett Stackable Aluminum Banquet Chair

SKU: BQT-2042-AL



PRODUCT SPECIFICATIONS

Everett Banquet Chair Specifications

Overall Height	36 in
Overall Width	17.5 in
Overall Depth	22 in
Seat Height	18 in
Seat Width	15 in
Seat Depth	15 in
Seat Foam Thickness	2.5 in
Weight	11 lb
Weight Capacity	400 pounds
Frame Material	Aluminum
COM Seat Total	0.5 yards
COM Back Total	0.5 yards

Discover the exceptional seating comfort offered by the Everett Banquet Chair.

Thoughtfully designed to seamlessly marry durability and elegance, this chair showcases a sturdy aluminum frame that guarantees enduring performance. What sets it apart even more is its **stackable** design and glide feature, which simplify both storage and arrangement, making it a versatile and pragmatic choice.

PRODUCT FEATURES

- 1 Stacks 10 High
- 2 10 Year Warranty
- 3 Cal 117 Fire Safety Rating
- 4 Fully Welded 12 Gauge Aluminum Frame

Everett Customization

CRAFTED FOR UNIQUE BRANDS

Upholstery Options

Visit our [Upholstery Collection](#) page to search through thousands of upholstery options.

Our company offers the option of COM (Customer's Own Material) in our chair production, enabling clients to select their own materials to create chairs that perfectly align with their unique preferences

Chair Frame Finishes



Solid Black



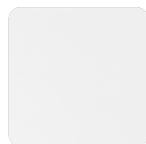
Texture



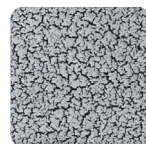
Gunmetal



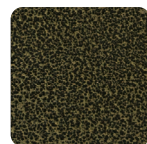
Metallic
Silver



White



Silver Vein



Gold Vein



Copper



Metallic



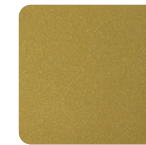
Bronze



Walnut



Copper



Metallic



Cream

Add-Ons



Ganging mechanism

Upgrade your chairs with our practical ganging mechanism. Seamlessly link one chair to another, providing stability and alignment for events and gatherings.



Webbed seating

Elevate your banquet chairs with the addition of webbed seating, designed for enhanced comfort.